



FRONT / ENTRANCE ELEVATION

SIDE ELEVATION



REAR / SIDE ELEVATION

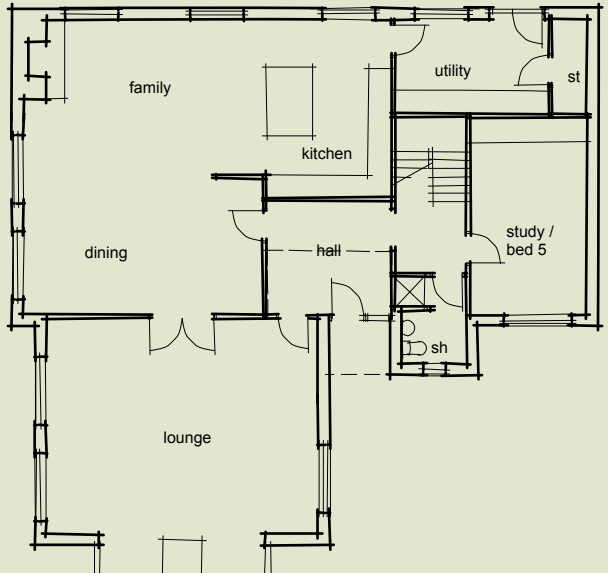
SIDE ELEVATION

MATERIALS LEGEND:

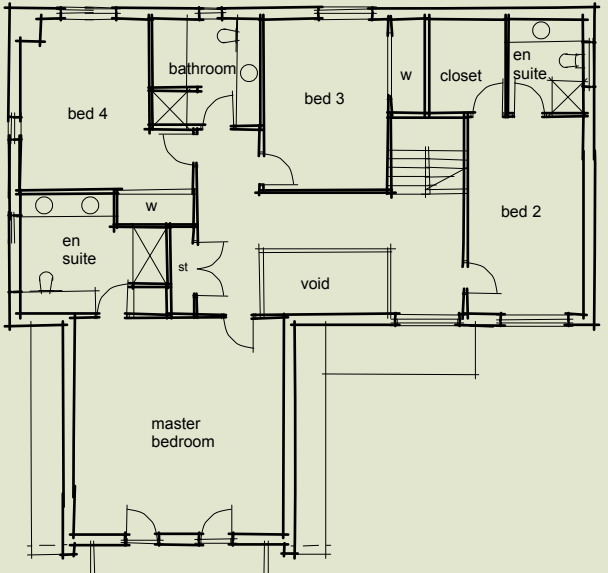
1. Brick
2. Stained Timber Cladding
3. Clay Pan Tiles
4. Timber Windows

AREA SCHEDULE

GF = 164.3m²
 FF = 148.3m²
 Total = 312.6m²
 4/5 Bedroom

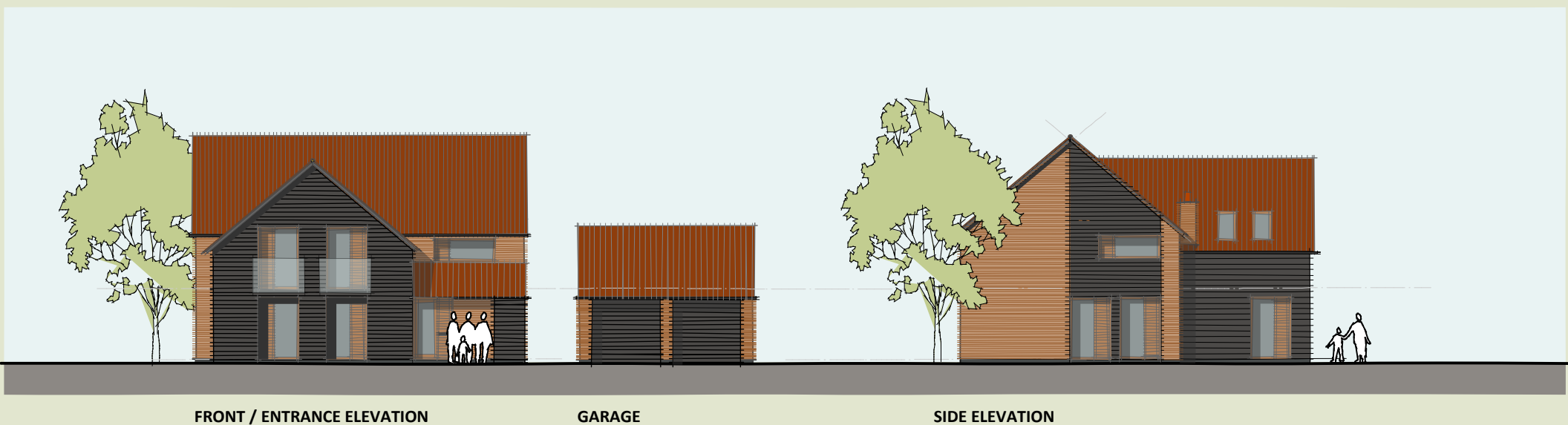


GROUND FLOOR PLAN



FIRST FLOOR PLAN

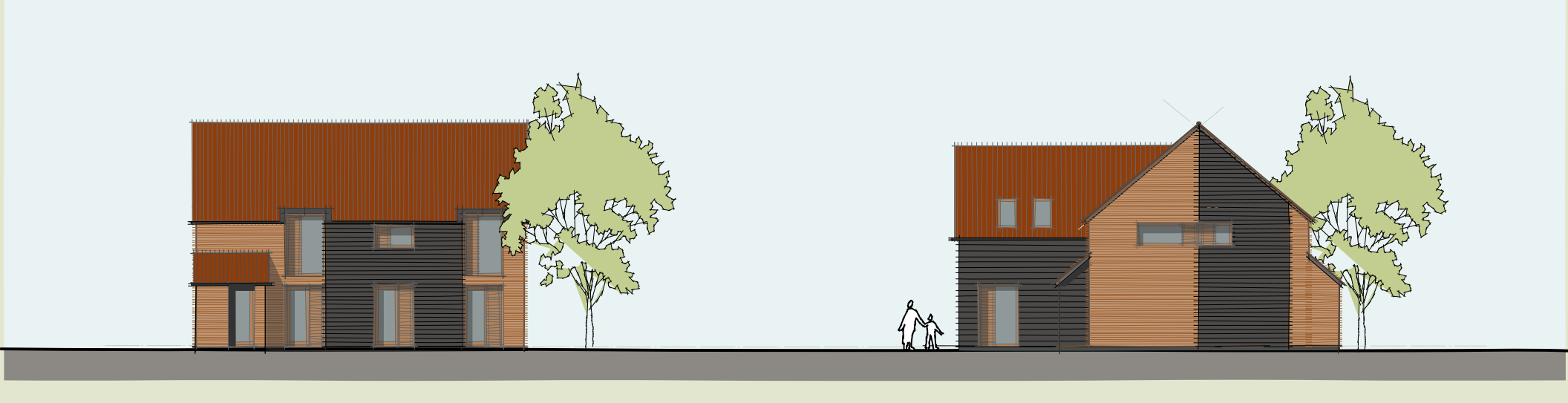
House Type A 4/5 bed



FRONT / ENTRANCE ELEVATION

GARAGE

SIDE ELEVATION



REAR / SIDE ELEVATION

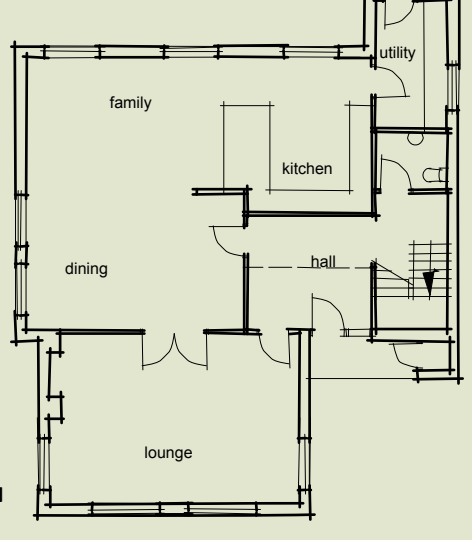
SIDE ELEVATION

MATERIALS LEGEND:

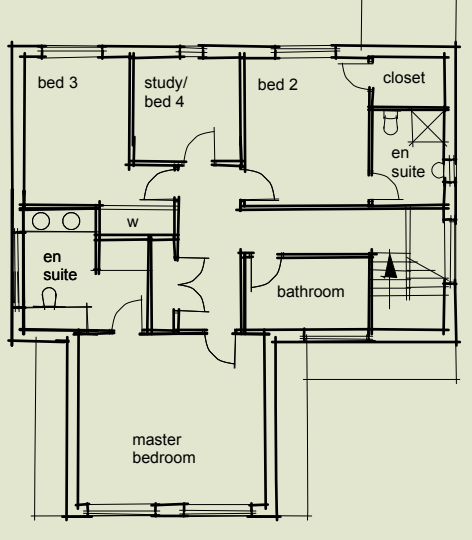
1. Brick
2. Stained Timber Cladding
3. Clay Pan Tiles
4. Timber Windows

AREA SCHEDULE

GF = 113.27m²
 FF = 103.04m²
 Total = 216.67m²
 3/4 Bedroom

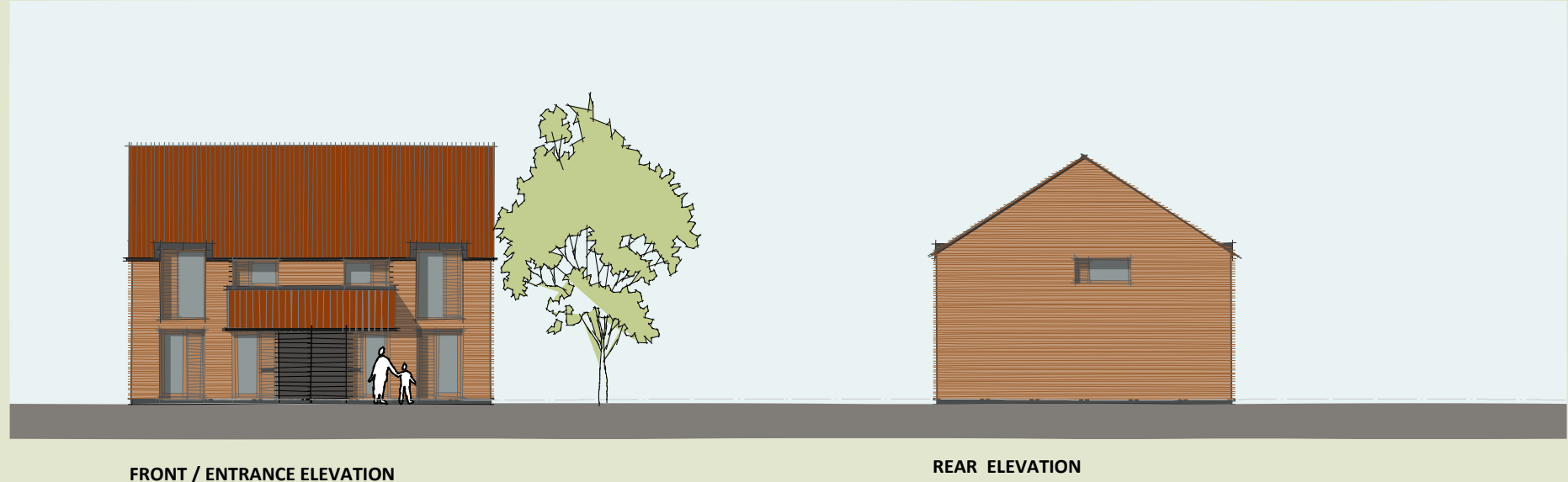


GROUND FLOOR PLAN



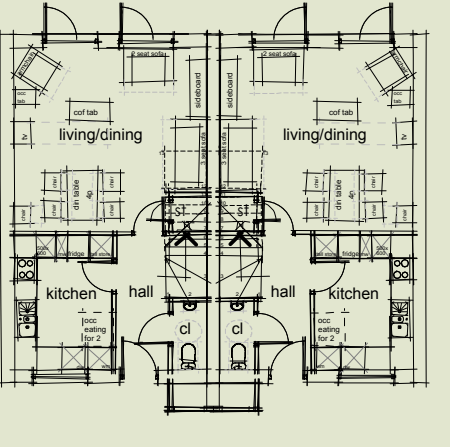
FIRST FLOOR PLAN

House Type B 3/4 bed

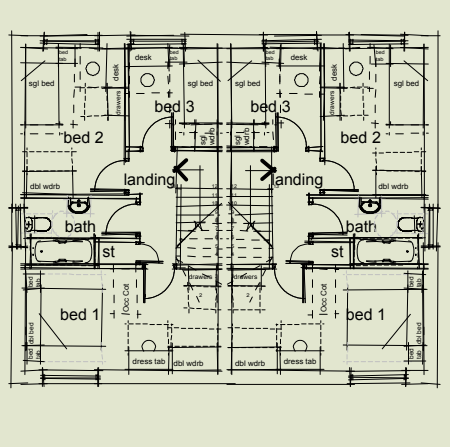


FRONT / ENTRANCE ELEVATION

REAR ELEVATION



FIRST FLOOR PLAN



GROUND FLOOR PLAN

House Type C 'Affordable' 3 bed

**VILLAGE HOUSING PROPOSAL
 THE STREET : RUSHMERE ST ANDREW**



St. Michael's, Queen Street, Derby, DE1 3SU
 Tel: 01332 365777 - Fax: 01332 290314
 enquiries@lathamarchitects.co.uk
 www.lathamarchitects.co.uk

Chartered Architects
 Urban Designers
 Landscape Architects
 Town Planners
 Historic Building & Conservation Advisors

