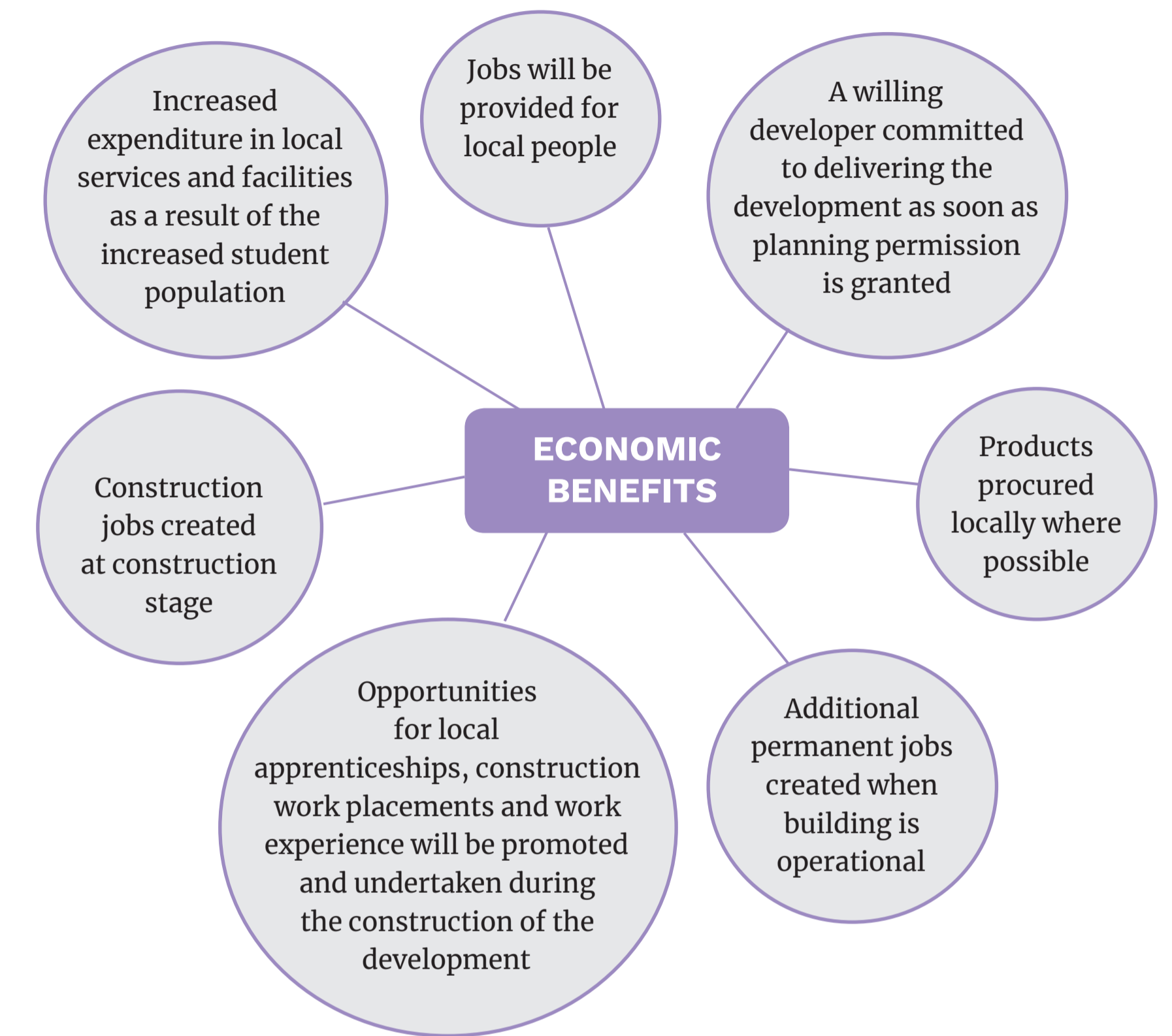
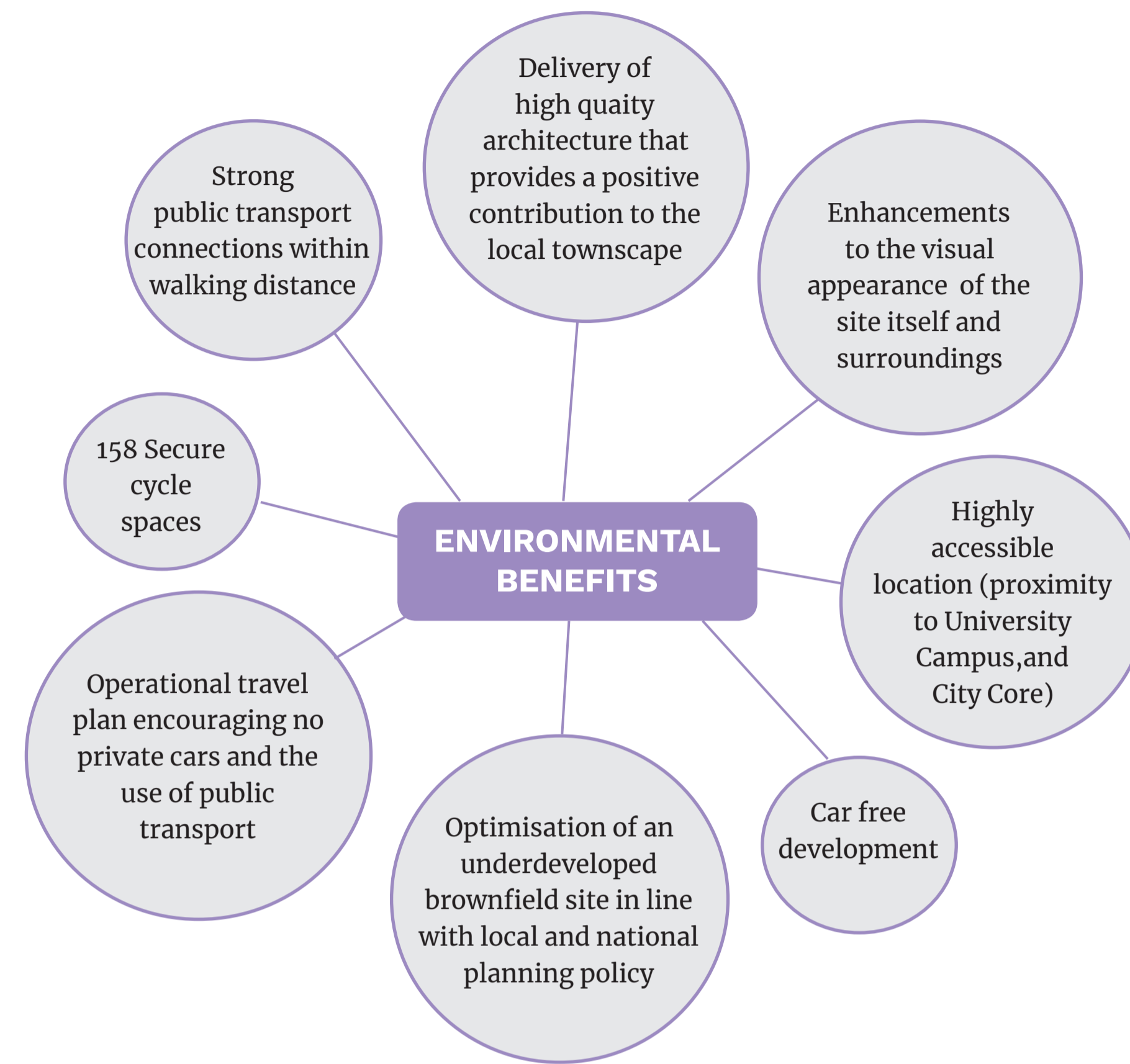
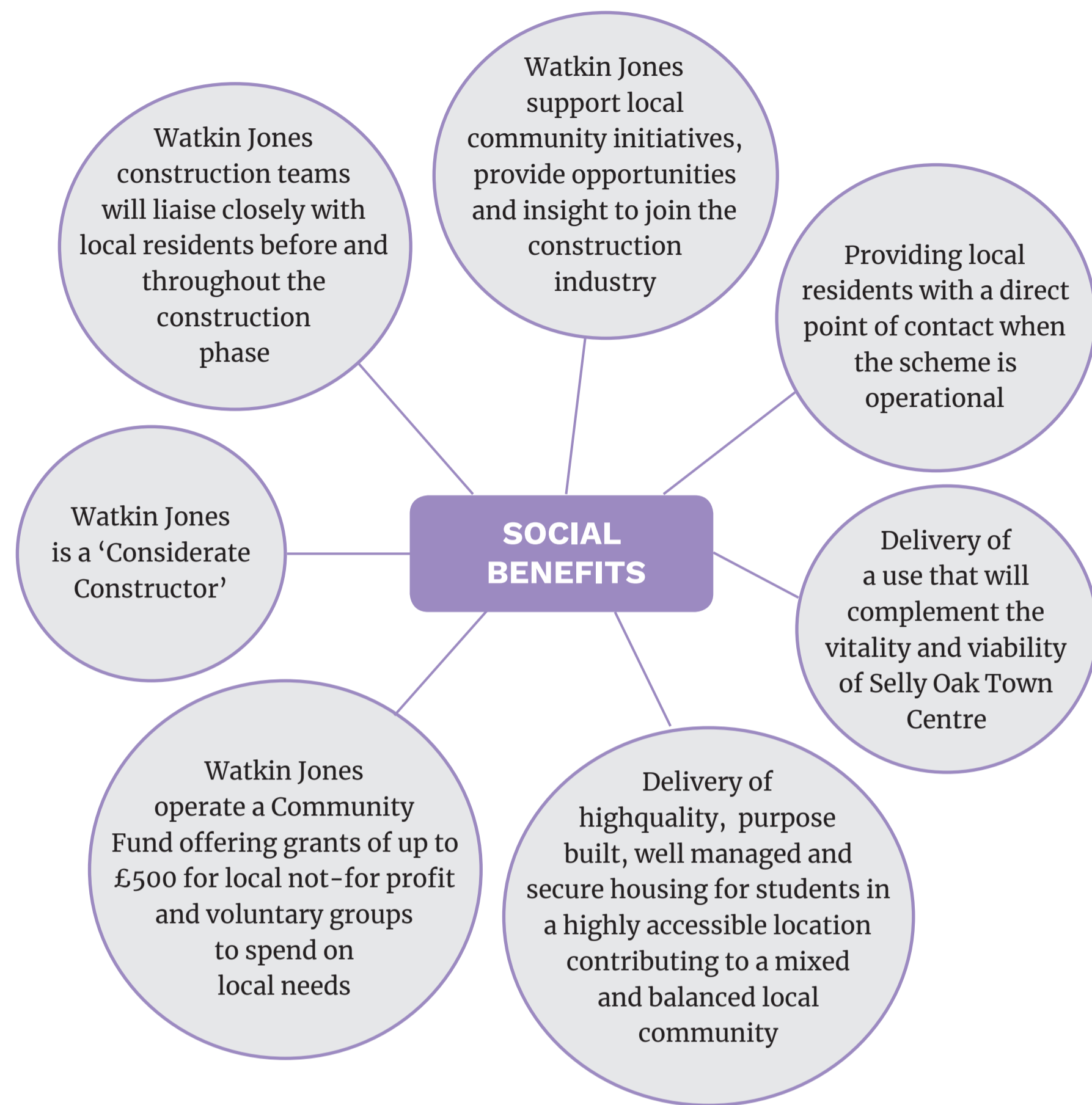


5: KEY LOCAL BENEFITS

SELLY OAK DEVELOPMENT, UNITS 7-8, ELLIOTT ROAD, SELLY OAK



CASE STUDIES: YMCA BOURNMOOUTH

YMCA Bournemouth @YMCA Bournemouth · Jun 7
 Leading construction company @Watkin_Jones has donated £500 to our youth work in #Townsend, Bournemouth. Keiron Davies, Asst Site Manager, said: "We are thrilled to present this to an organisation we know does great work for the area's young people".
 More> tiny.cc/91qx7y



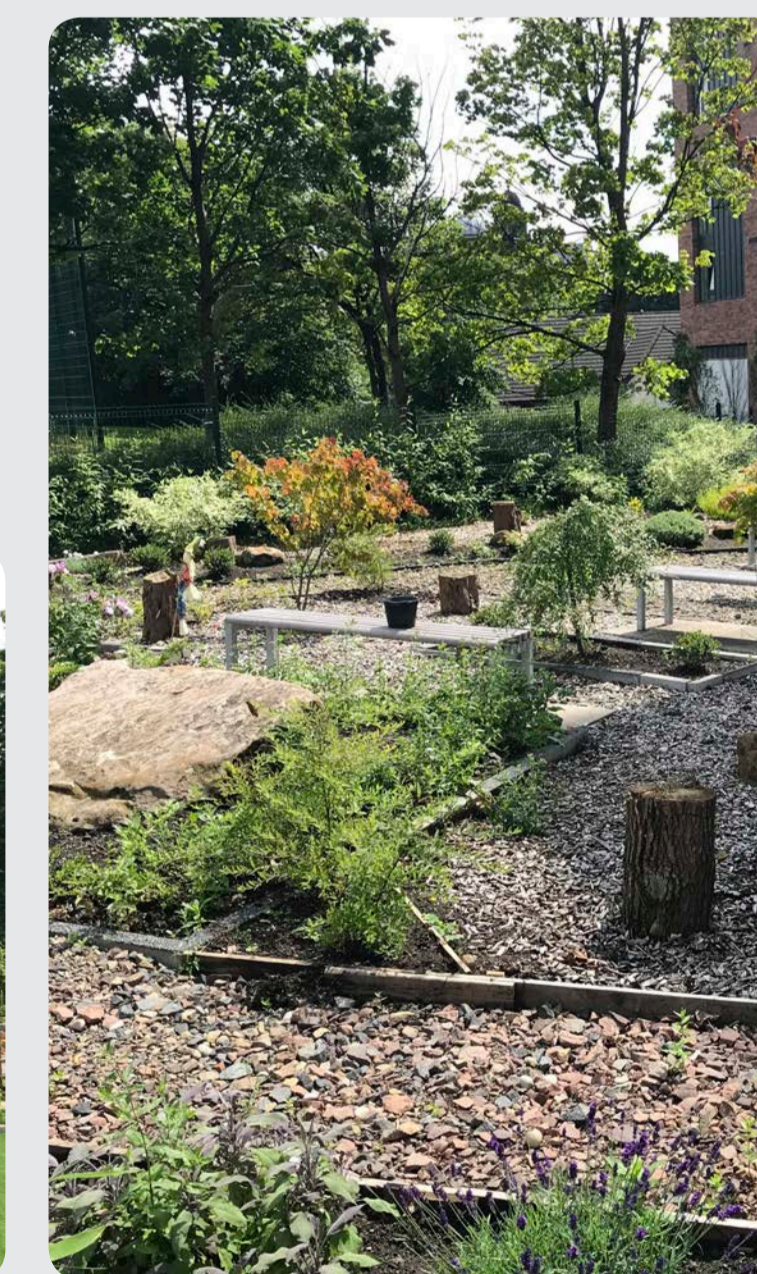
CASE STUDY: YMCA DORSET CHILDREN'S FOUNDATION

Watkin Jones Group has donated £2000 (so far) to various local charities in the area including YMCA (Townsend branch), Dorset Children's Foundation, Above and Beyond & The Salvation Army over the last few months and look forward to continuing the trend.

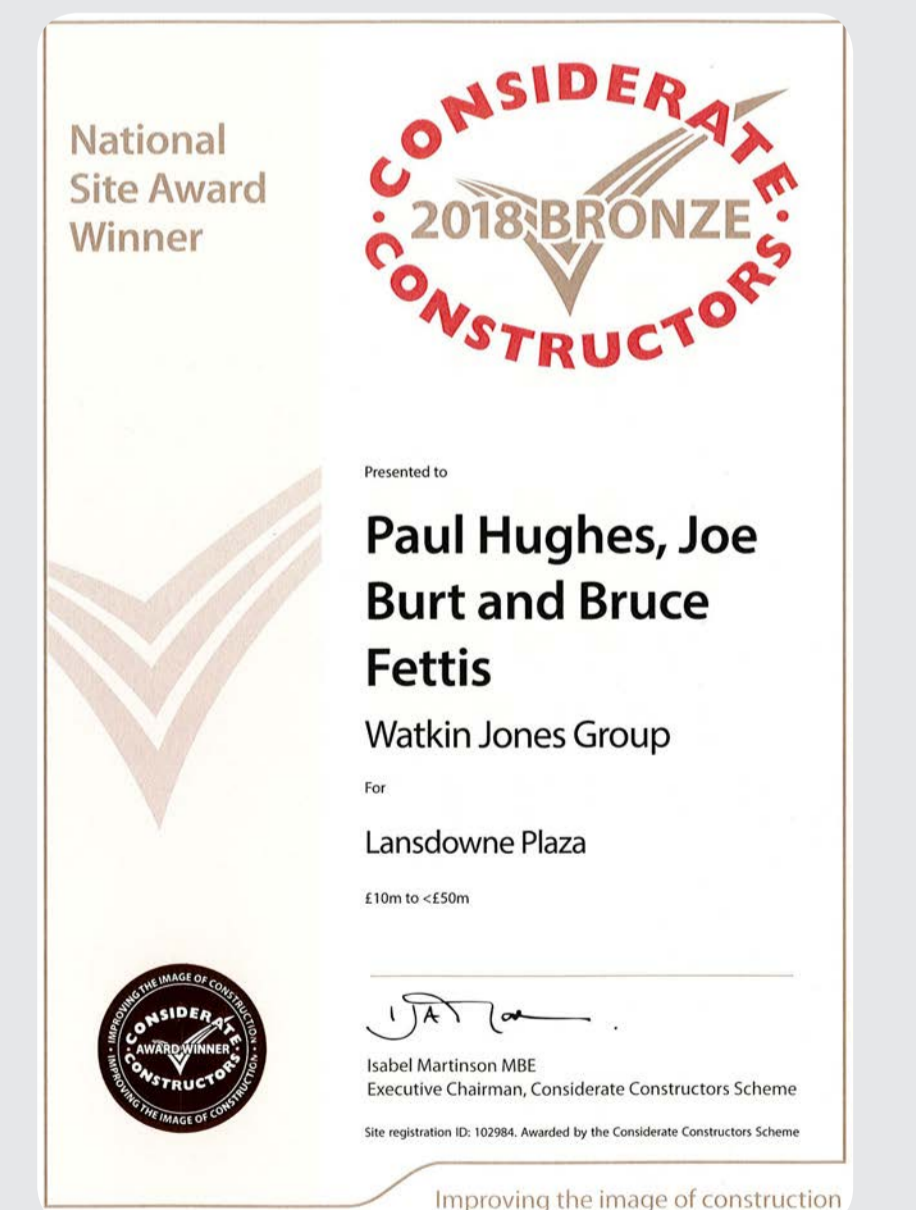


CASE STUDY: ST MUNGOS, GLASGOW

Watkin Jones Group donated leftover materials from the building construction and provided the use of construction machinery and equipment to deliver Townhead Community Garden for residents.



CONSIDERATE CONTRACTORS



TIMELINES

Submit Planning Application - Autumn 2019
 Planning Committee Determination Date - Early 2020
 Project Completion - August 2022

HOW TO COMMENT

Please let us know your thoughts on the draft proposals by completing a feedback form and returning it in the postbox, or by post before **Thursday 19th September 2019**.

